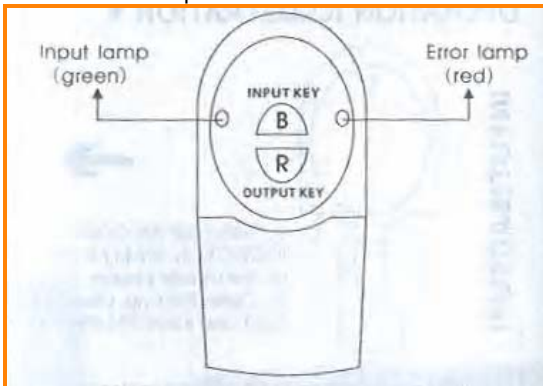


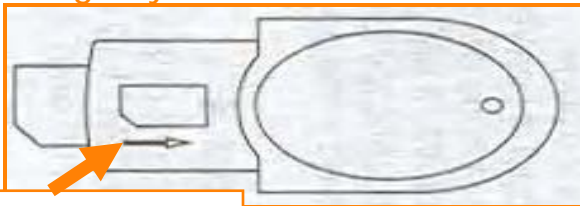
### Emergency SIM Copiers

#### How to use SIM copier to copy your contacts on the Emergency SIM?

1. If there is a Pin code available on your original SIM card, you must first switch Pin code protection off on your mobile phone then begin to copy to SIM copier device.

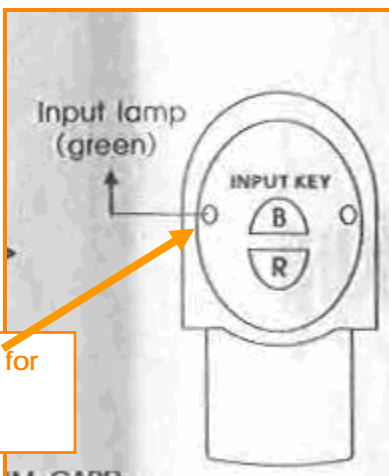


#### Emergency SIM Card Device



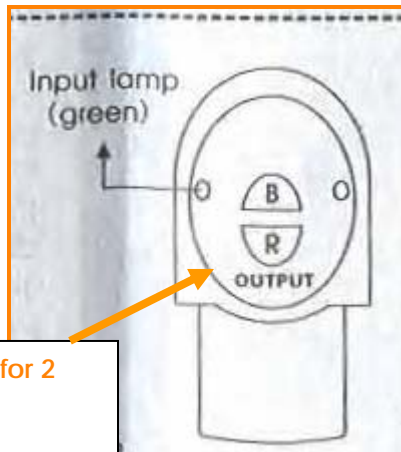
Open the cap & insert old SIM card

2. Open the cap and insert old SIM card.
3. Press key B for 2 seconds, Input lamp will turn from normal light to flash then copier will begin to input – (backup Information).



Press B key for 2 seconds

4. Complete lamp will turn back to normal light after finishing inputting information.
5. Take out SIM card.
6. Open the cap and insert the Emergency SIM card (**New SIM**).



Press R key for 2 seconds

7. Press R key for 2 seconds and output lamp will be from normal light to flash, then copier will begin to output (copy information).
8. Complete lamp will turn back to normal light after finishing outputting information
9. Take out the Emergency SIM card, now all contacts and information are copied on your new SIM card.

**Note:**

- Red lamp on indicates operation is on.
- Green Lamp on indicates operation is finished.
- Error lamp on indicates one of following problems.

**Error lamp indicates following problem:**

- 1) **Error lamp slow flash (flash 1 time in 1 second):**
  - If there are no records in the SIM card or no records in the copier when outputting (copying information to Emergency SIM card).
- 2) **Error lamp fast flash (flash 3 times in 1 second) if:**
  - SIM card is invalid.
  - SIM card is damaged.
  - SIM card incompatible with the copier.
  - SIM card has PIN code protection.
  - SIM card is pulled during process of outputting or inputting information.
  - Battery out.

**To stop operation:**

- If you want to stop operation in case you had pressed wrong key, you must press (Input key B & output key R) at the same time in order to stop copying and save the left.